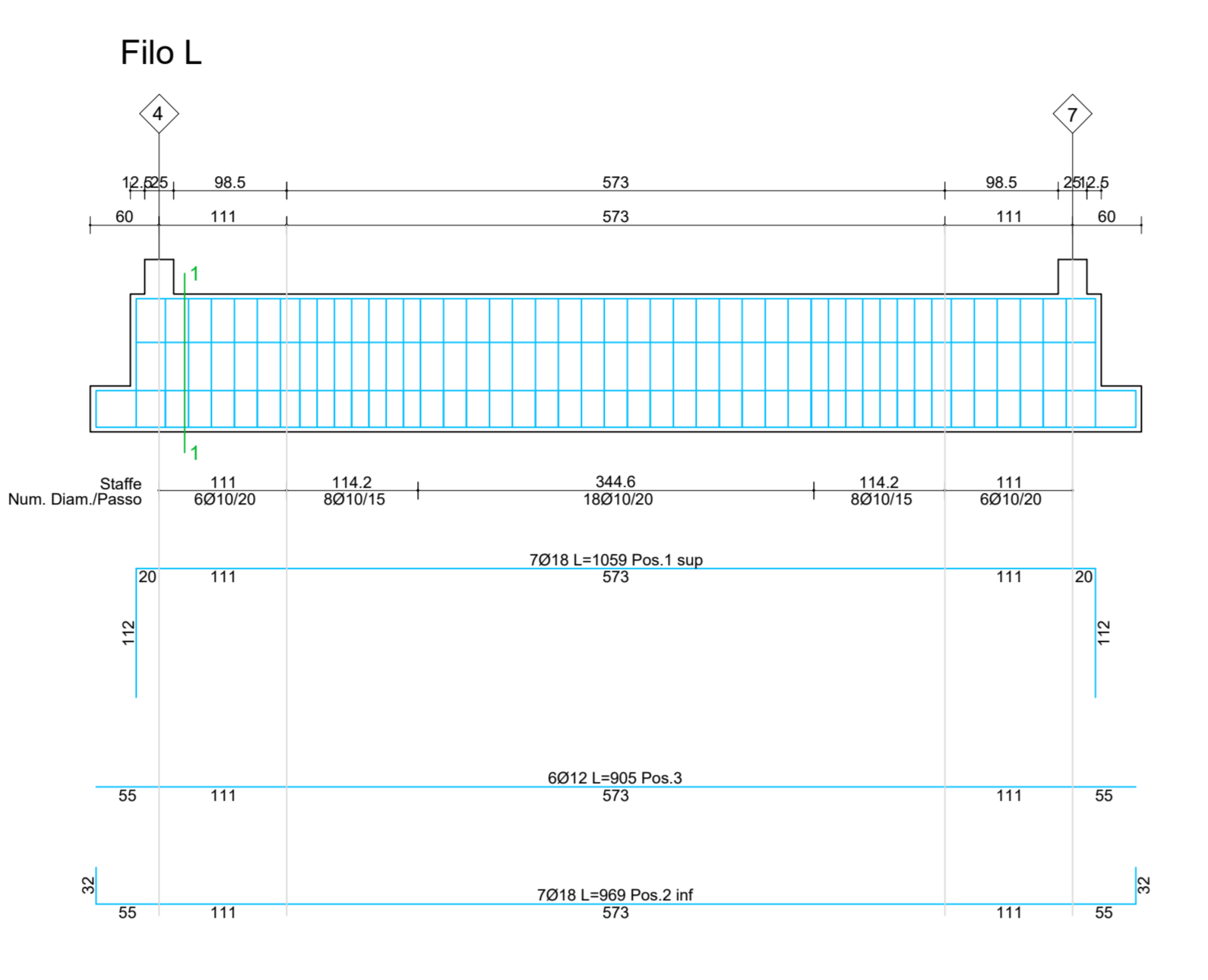
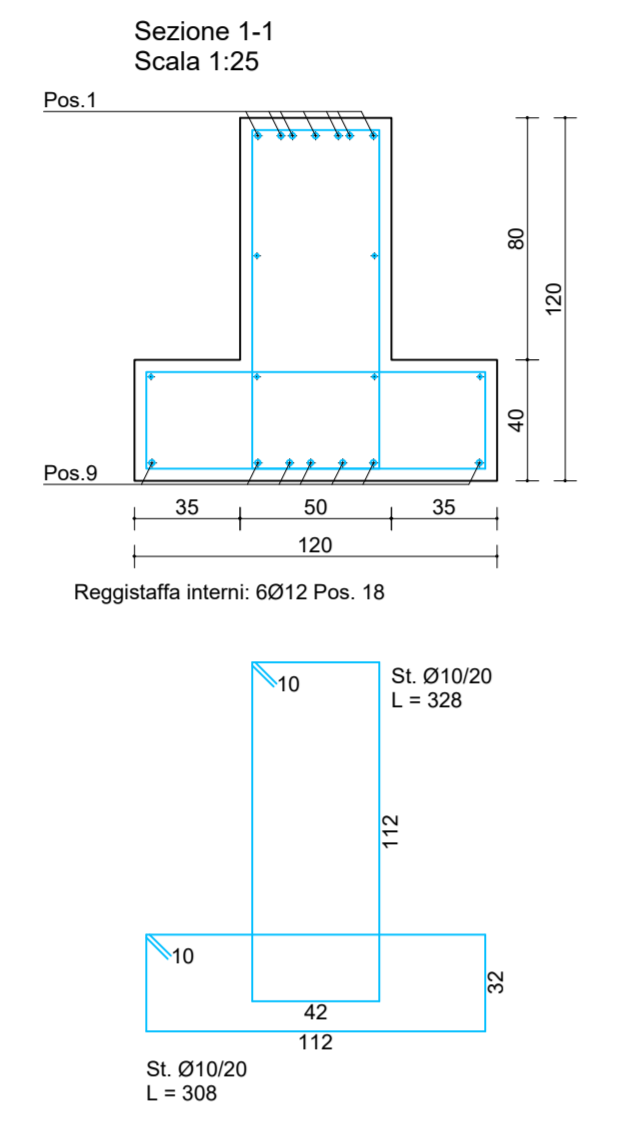


Filo G

Schema	Pos.	Num.	Diam (mm)	L (m)	Peso (kg)
1056	1	7	18	1300	167,90
995	2	7	18	995	135,13
1110	3	7	18	1110	155,21
1180	4	7	18	1180	165,00
1160	5	7	18	1160	154,31
987	6	7	18	987	133,41
945	7	7	18	945	132,14
833	8	7	18	833	130,74
1056	9	7	18	1300	167,90
1050	10	7	18	1050	148,92
1056	11	7	18	1300	167,90
750	12	6	18	750	119,85
1105	13	7	18	1105	154,61
1056	14	8	18	1056	160,61
358	15	7	18	358	54,53
650	16	2	18	650	23,97
1180	17	8	18	1180	166,57
1000	18	6	12	1200	63,82
1000	19	6	12	1200	63,82
1000	20	6	12	1200	63,82
1000	21	6	12	1200	63,82
1000	22	6	12	1200	63,82
1066	23	6	12	1066	54,94

Staffe:
 Camp. / Tratti
 Num. Diam (mm) L (m) Peso (kg)
 1/1 25 10 308 66,62
 1/1 28 10 308 63,17
 2/1 13 10 308 28,29
 2/1 13 10 308 28,29
 4/1 14 10 308 36,87
 4/1 14 10 308 36,87
 5/1-2-3 44 10 308 88,96
 5/1-2-3 44 10 308 88,96
 6/1 10 10 308 20,22
 6/1 10 10 308 20,22
 7/1 14 10 308 28,31
 7/1 14 10 308 28,31
 8/1 14 10 308 28,31
 8/1 14 10 308 28,31
 9/1 30 10 308 60,67
 9/1 30 10 308 60,67
 10/1 30 10 308 60,67
 10/1 30 10 308 60,67
 11/1 14 10 308 28,31
 11/1 14 10 308 28,31
 12/1 14 10 308 28,31
 12/1 14 10 308 28,31
 13/1 30 10 308 60,67
 13/1 30 10 308 60,67
 14/1 17 10 308 34,38
 14/1 17 10 308 34,38
 15/1-2-3 24 10 308 48,62
 15/1-2-3 24 10 308 48,62
 16/1-2-3 24 10 308 48,62
 16/1-2-3 24 10 308 48,62
 17/1-2-3 24 10 308 48,62
 17/1-2-3 24 10 308 48,62

Peso totale dell'isolato = 427,20 kg
 Volume calcestruzzo = 10,21 mc
 Incidenza acciaio = 71,40 kg/mc

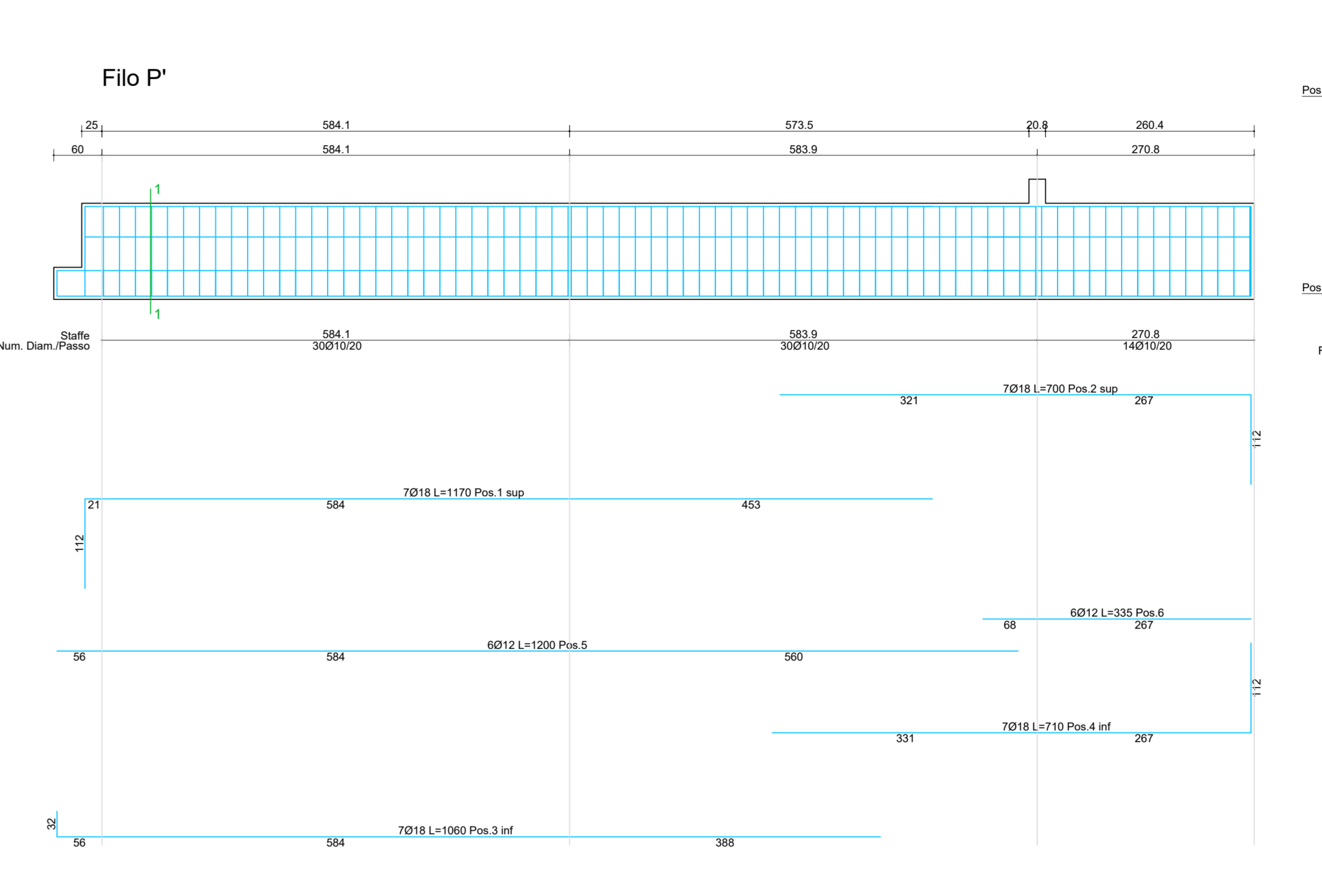
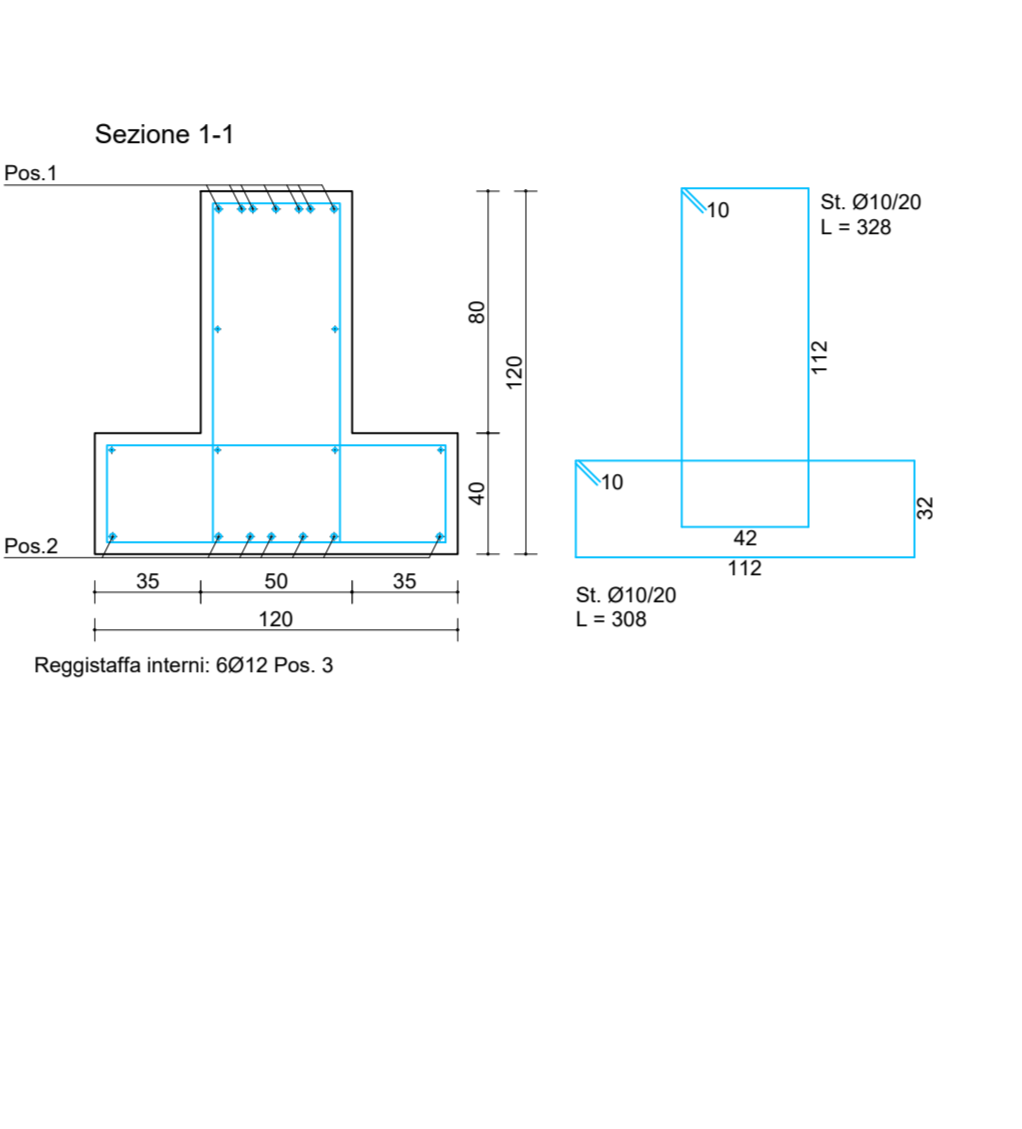


Filo L

Schema	Pos.	Num.	Diam (mm)	L (m)	Peso (kg)
1056	1	7	18	1056	148,92
995	2	7	18	995	135,00
905	3	6	12	905	48,21

Staffe:
 Camp. / Tratti
 Num. Diam (mm) L (m) Peso (kg)
 1/1 6 10 308 11,39
 2/1-2-3 32 10 308 64,71
 3/1 6 10 308 11,39
 3/1 6 10 308 11,39

Peso totale dell'isolato = 804,32 kg
 Volume calcestruzzo = 7,00 mc
 Incidenza acciaio = 72,00 kg/mc

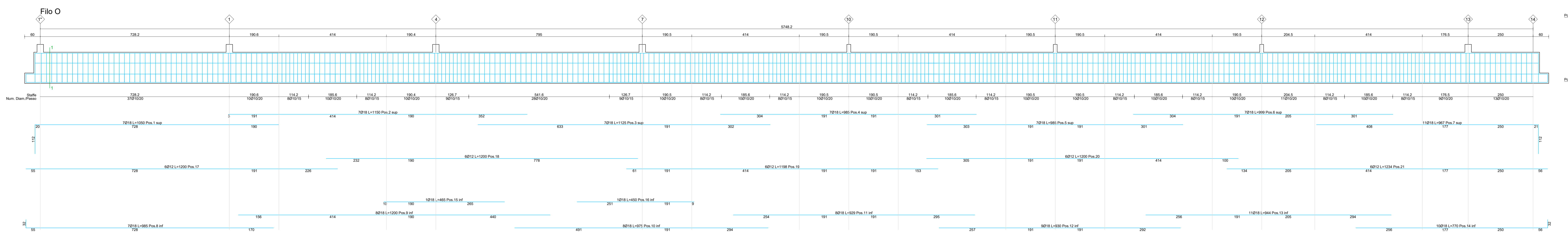
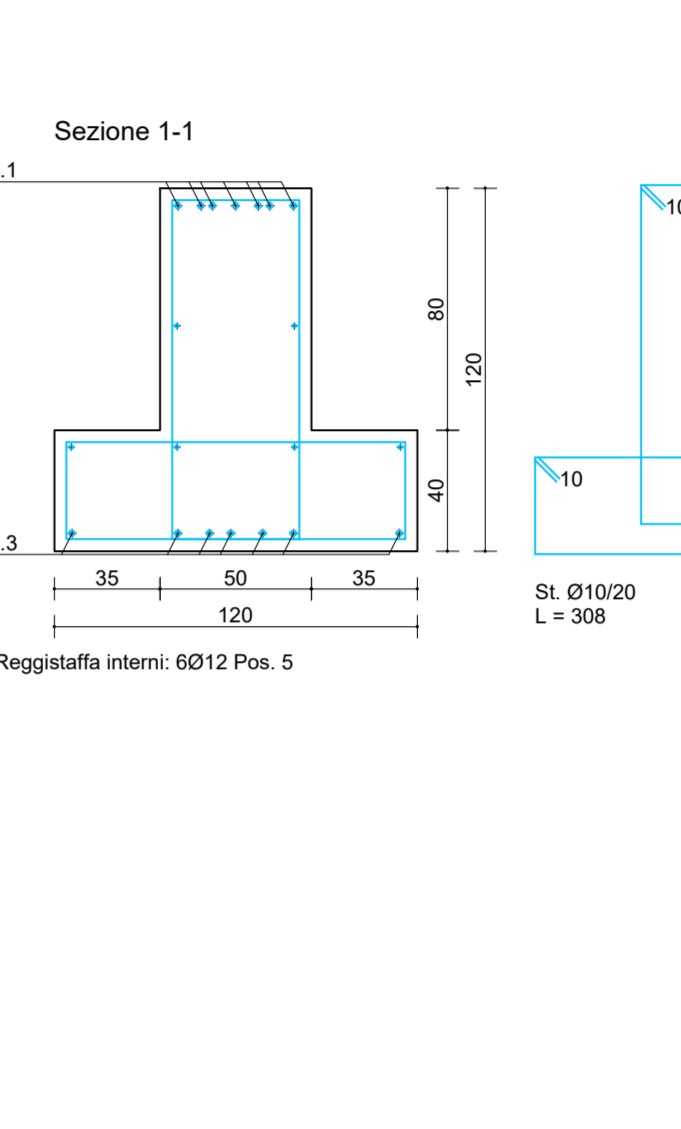


Filo P'

Schema	Pos.	Num.	Diam (mm)	L (m)	Peso (kg)
1056	1	7	18	1170	163,00
588	2	7	18	700	97,89
1056	3	7	18	1056	148,22
590	4	7	18	710	98,28
1000	5	6	12	1200	63,82
305	6	6	12	305	17,85

Staffe:
 Camp. / Tratti
 Num. Diam (mm) L (m) Peso (kg)
 1/1 30 10 308 60,67
 1/1 30 10 308 60,67
 2/1 30 10 308 60,67
 2/1 30 10 308 60,67
 3/1 14 10 308 28,31
 3/1 14 10 308 28,31

Peso totale dell'isolato = 630,52 kg
 Volume calcestruzzo = 12,05 mc
 Incidenza acciaio = 65,34 kg/mc

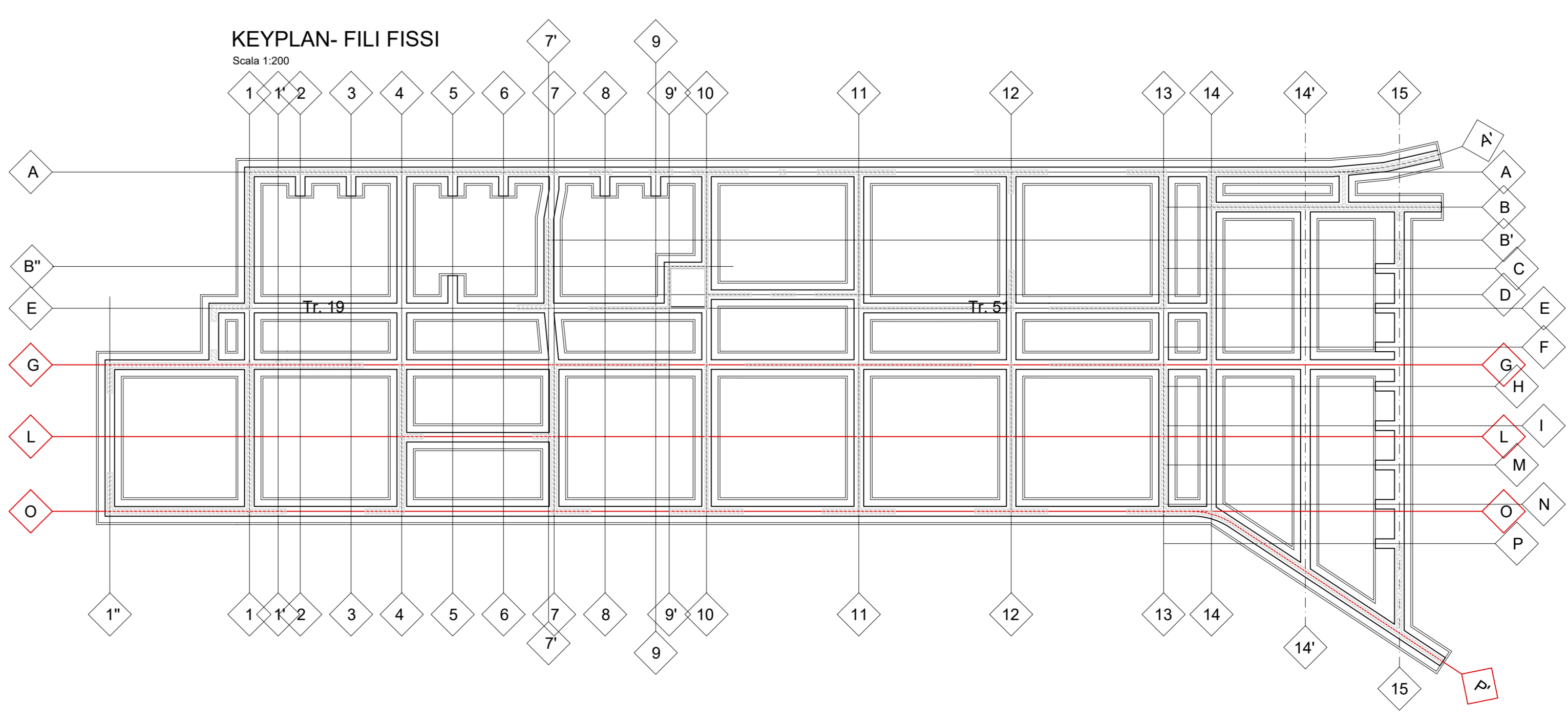
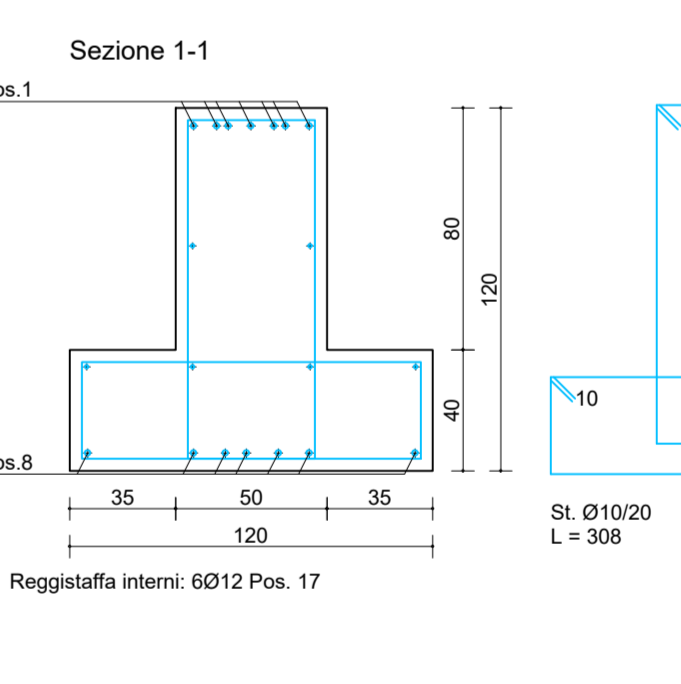


Filo O

Schema	Pos.	Num.	Diam (mm)	L (m)	Peso (kg)
1008	1	7	18	1050	148,82
1100	2	7	18	1100	160,81
1100	3	7	18	1100	160,81
985	4	7	18	985	137,73
995	5	7	18	995	137,73
1000	6	7	18	999	139,69
805	7	11	18	907	272,49
985	8	7	18	985	137,73
1000	9	8	18	1200	191,77
875	10	8	18	875	155,81
830	11	9	18	829	148,30
830	12	9	18	830	149,20
844	13	11	18	944	207,63
738	14	10	18	770	133,81
465	15	1	18	465	9,29
460	16	1	18	450	8,99
1000	17	6	12	1200	63,82
1000	18	6	12	1200	63,82
1000	19	6	12	1194	63,82
1000	20	6	12	1200	63,82
1235	21	6	12	1234	65,73

Staffe:
 Camp. / Tratti
 Num. Diam (mm) L (m) Peso (kg)
 1/1 57 10 308 74,62
 1/1 57 10 308 72,90
 2/1 10 10 308 20,22
 2/1 10 10 308 20,22
 3/1-2-3 24 10 308 48,62
 3/1-2-3 24 10 308 48,62
 4/1 10 10 308 20,22
 4/1 10 10 308 20,22
 5/1-2-3 44 10 308 88,96
 5/1-2-3 44 10 308 88,96
 6/1 10 10 308 20,22
 6/1 10 10 308 20,22
 7/1-2-3 24 10 308 48,62
 7/1-2-3 24 10 308 48,62
 8/1 10 10 308 18,90
 8/1 10 10 308 18,90
 9/1 10 10 308 20,22
 9/1 10 10 308 20,22
 10/1-2-3 24 10 308 48,62
 10/1-2-3 24 10 308 48,62
 10/1-2-3 24 10 308 48,62
 10/1-2-3 24 10 308 48,62
 11/1 10 10 308 18,90
 11/1 10 10 308 18,90
 12/1 10 10 308 18,90
 12/1 10 10 308 18,90
 13/1-2-3 24 10 308 48,62
 13/1-2-3 24 10 308 48,62
 14/1 10 10 308 20,22
 14/1 10 10 308 18,90
 15/1 11 10 308 20,80
 15/1 11 10 308 20,80
 16/1-2-3 24 10 308 48,62
 16/1-2-3 24 10 308 48,62
 17/1 9 10 308 18,90
 17/1 9 10 308 17,20
 18/1 10 10 308 20,22
 18/1 10 10 308 20,22

Peso totale dell'isolato = 3025,45 kg
 Volume calcestruzzo = 10,85 mc
 Incidenza acciaio = 75,63 kg/mc



COMUNE DI EMPOLI
CITTA' METROPOLITANA DI FIRENZE

REALIZZAZIONE DELLA NUOVA SCUOLA PRIMARIA
IN VIA LIGURIA AD EMPOLI

EUTECNE
Architettura | Ingegneria

PROGETTO ESECUTIVO

ATI DI PROGETTAZIONE:
MAGGIORANZA
EUTECNE
Architettura | Ingegneria
Via. S. Maria del Fiore, 110 - Empoli
Tel. +39 0572 741111 - Fax +39 0572 741111
www.eutecne.it

COMPARTI: **FM** (Ingegnere) e **IPROVER** (Ingegnere)

COMITENTE: **COMUNE DI EMPOLI**
R.U.P. Ing. Paolo SCARDOLI

TITOLO: TRAVI DI FONDAZIONE Tav. 2 di 4
SCALA: 1:50

REVISIONI:
REV. DATA MOTIVO DELLA EMISSIONE ESEGUITO CONTROLLATO APPROVATO
A SET. 2021 PROGETTO ESECUTIVO FARDINO F. FARDINO